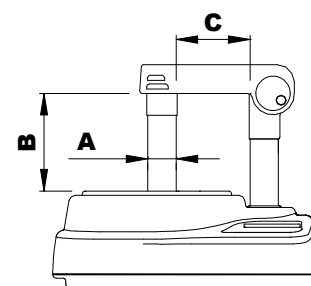


LBH45D Linmast Induction Heater



Technical Specification

<i>Model:</i>	<i>LBH45DA</i>	<i>LBH45D</i>
<i>Power Consumption (Max.):</i>	<i>1.0 kva</i>	<i>1.0kva</i>
<i>Voltage:</i>	<i>110 v</i>	<i>220v/240 v</i>
<i>Current (Maximum):</i>	<i>9 A</i>	<i>10 A</i>
<i>Frequency:</i>	<i>60 Hertz</i>	<i>50/60 Hertz</i>
<i>Duty Cycle:</i>	<i>Continuous</i>	
<i>Overall Dimensions (lwxhx):</i>	<i>31 x 21 x 23 cm</i>	
<i>Core Section (AxA):</i>	<i>30 x 30 mm</i>	
<i>Pole Height (B):</i>	<i>80 mm</i>	
<i>Window Width (C):</i>	<i>70 mm</i>	
<i>Cross Bars Supplied:</i>	<i>15 x 15 mm</i>	



<i>Unit Weight:</i>	<i>8 kg</i>
<i>Core Diameter:</i>	<i>46 mm</i>
<i>Efficient Heat Limit:</i>	<i>10 kg</i>
<i>Cross Bar Diameter:</i>	<i>22 mm</i>

Features

- *Automatic Demagnetisation (Residual magnetism < 2 A/cm)*
- *3 Power Steps – High, Medium & Low*
- *Temperature Control (0 to 250°C)*
- *Time Control (0 to 60 minutes)*
- *Temperature Hold Function*
- *Preset Temperature 110°C*
- *LCD Display*
- *User Friendly Menu Operation*
- *Current & Over-Temperature Protection*
- *Digital Temperature Calibration (±2°C)*
- *International Certification*